



# ArchiFrame newsletter

October 2020

*ArchiFrame has several new features since its 2019 version. These improvements relate to the truss tool, element settings, planks and machinings, BIMx, and listings. Here is an overview of the new features!*

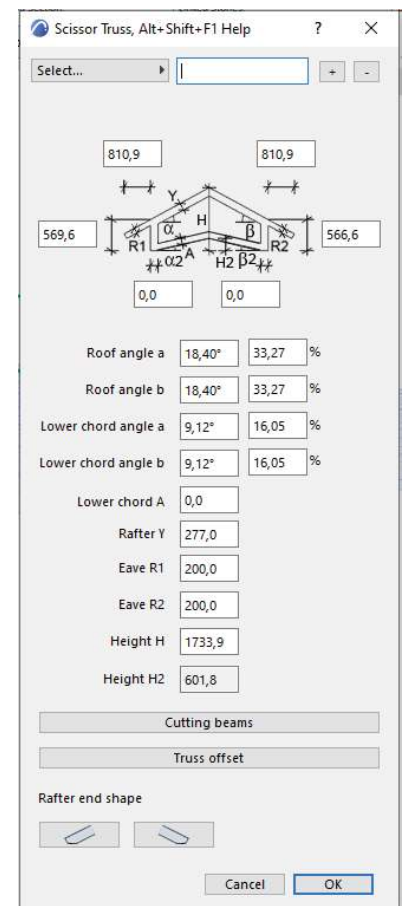
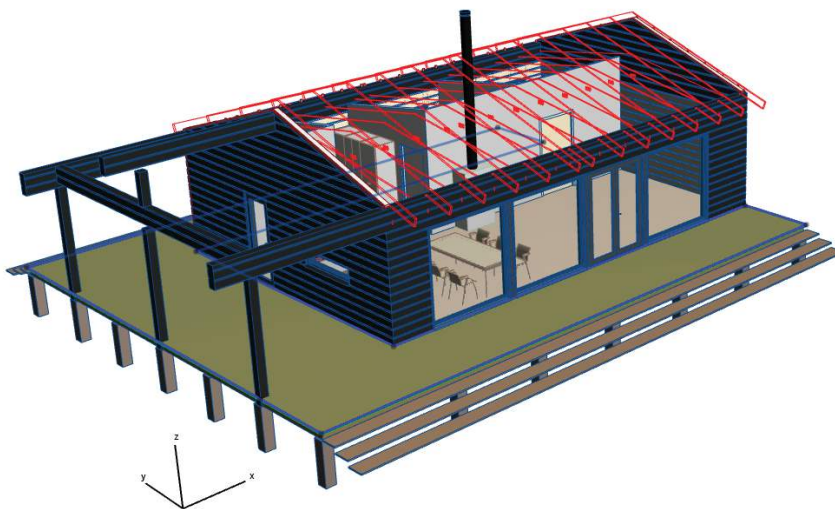
## Most important new features

### Mandatory online license

- From Archicad 24 onwards, you need an online license.
- Set up your license by opening ArchiFrame settings, choosing the Online license, and then opening the license settings.

### Improved truss tool

- Allows you to create and edit trusses parametrically,
- Leads to a quicker, and less error-prone work flow.
- A video tutorial is coming this fall - until then, consult the user manual by opening the truss tool and pressing Alt + Shift + F1.

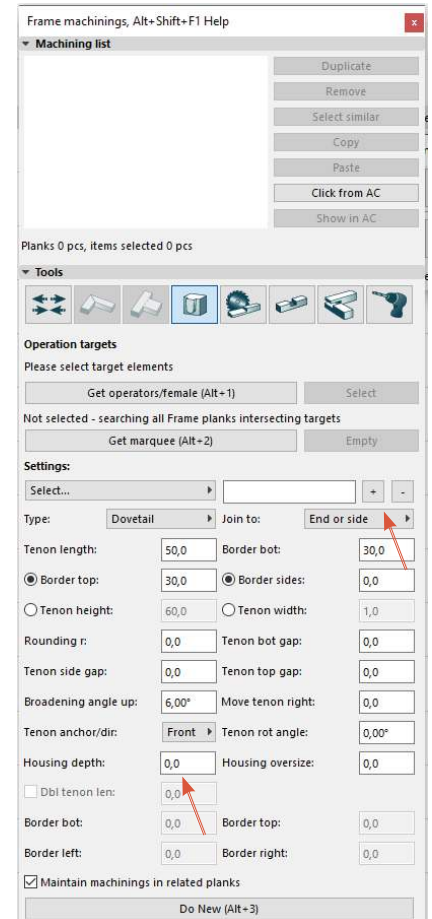
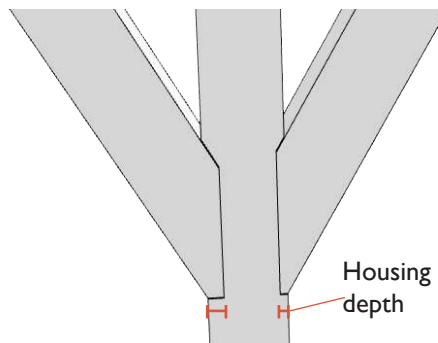
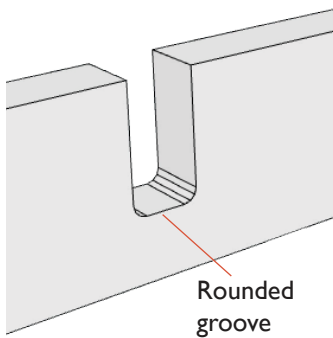




## Other improvements

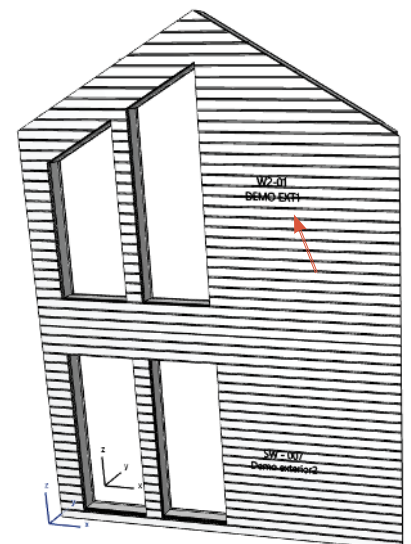
### New features relating to planks and machinings

- ArchiFrame now shows grooves as rounded, simulating the cuts made by CNC machines..
- Ability to save joint presets in the special plank tools joints menu. To save a preset, define the joint settings and click the “+” button near the right edge of the window (see image on the right).
- New housing depth parameter for the tenon and mortise joint (see right and bottom images).






### Better ID visibility in BIMx 3D views

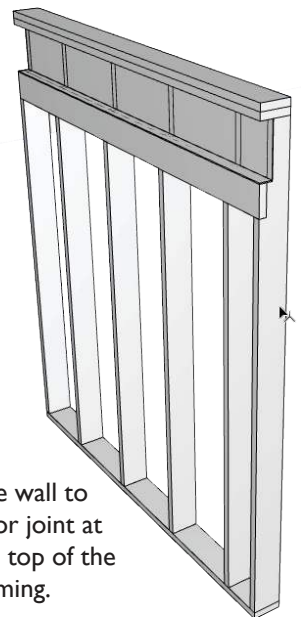
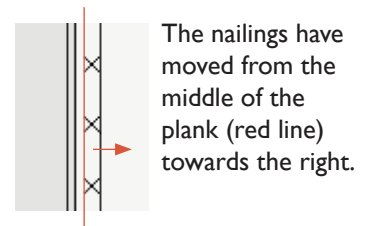
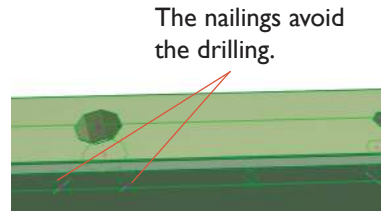
- Ability to change IDs' material in 3D.
- Ability to mirror IDs in 3D.
- ArchiFrame now shows the IDs on the inner and outermost surfaces of the walls. This ensures that they are always visible.



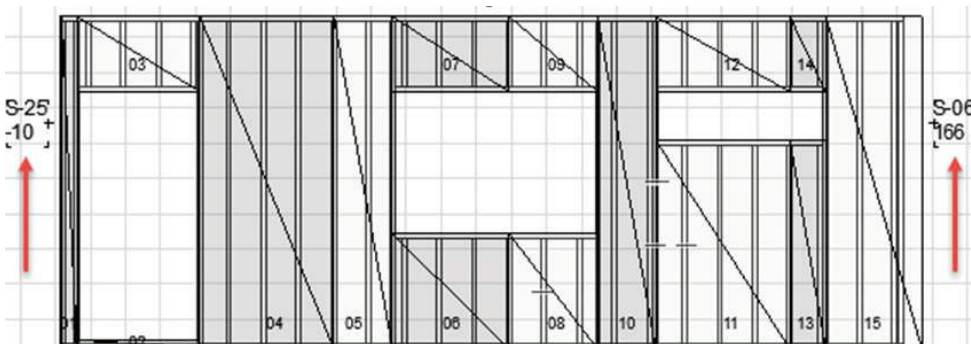


## New features for elements and boards

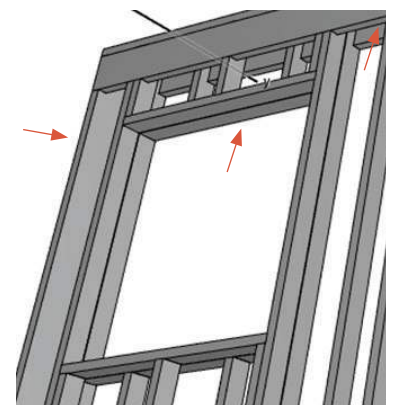
- New settings for nailings, allowing you to
  - Set a minimum distance between nails and grooves/drillings
  - Move nailings away from the middle of a plank (the default position).
-  Element settings contain a new wall to floor joint top.
- If there is enough space, the Z-stagger framing option now creates double
  - top/bottom plates
  - left/right studs
  - planks surrounding openings.
- Ability to leave a gap between boards.
  -  ▶ Special operations ▶ Gap between selected boards.
- When duplicating elements, the minimum distance rule is no longer applied to the new copy.
- Element settings now has subpanes. This makes the window smaller and more convenient to use.
- Possibility to set projection texts by script. For example, you can display layer offsets and corner types next to the projection.
- Improved element listings 
  - faster writing speed
  - compatibility with Excel (new for Mac users).



The wall to floor joint at the top of the framing.



You can edit the information displayed in projections with a script.



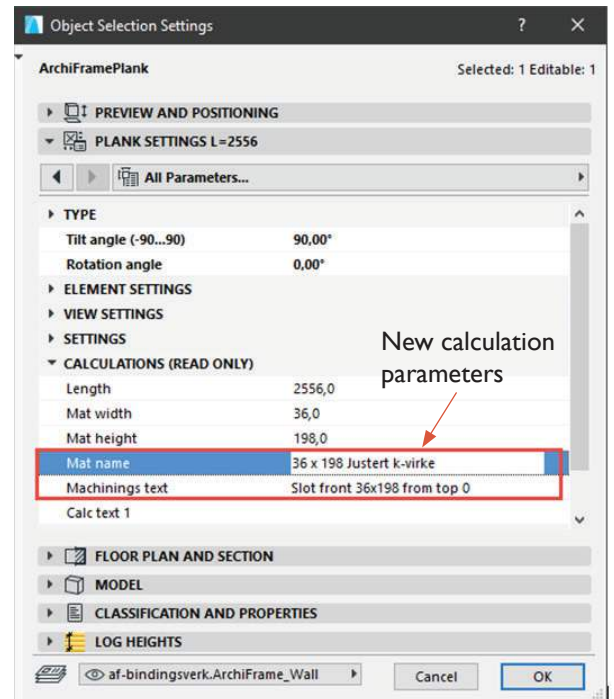
Z-stagger wall with double planks around edges.



## Improved listings

- New calculation parameters for ArchiFrame planks
  - Material name
  - Machinings text
- These can be included in an Archicad schedule.

Element ID	Mat name	Quantity	Machinings text
502	42x148	7	Angled beg in height dir 60.0°
503	42x148	6	Angled beg in height dir 60.0°
504	42x148	1	Angled beg in height dir 60.0°
505	42x148	1	Angled beg in height dir 60.0°, An
506	42x148	1	Angled beg in height dir 60.0°, An



## CNC-related improvements

- Many small updates and improvements for Weinmann wup & btl and Hundegger bvn-output

## A note on layouts for Archicad 23/24 users

- There are still some problems with automatically updating layouts - please be careful with them or disable the automatic updates until the error is fixed by Graphisoft.

